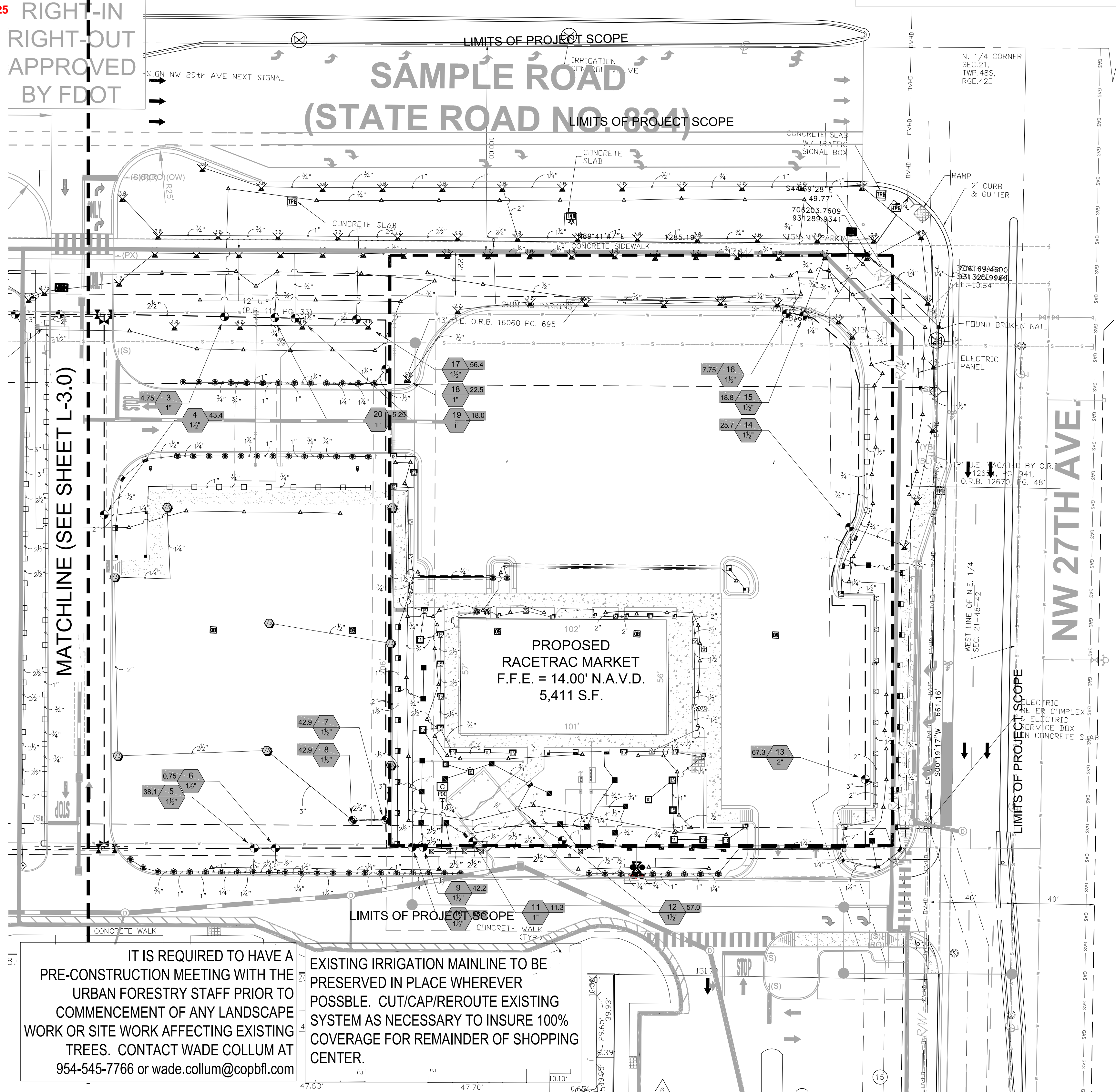


NOTE: TREE PLANTED IN SAMPLE ROAD
RIGHT-OF-WAY WILL REQUIRE A SEPARATE
FDOT LANDSCAPE PERMIT

REFER TO SHEET L-3.2 FOR IRRIGATION NOTES AND
SHEET L-3.3 FOR IRRIGATION DETAILS.

NOTE: ALL PLANTING AND IRRIGATION WORK AND MAINTENANCE, WITHIN THE SAMPLE ROAD AND NW 27TH AVENUE RIGHTS-OF-WAY, SHALL BE THE RESPONSIBILITY OF THE MATER DEVELOPER FOR THIS PROJECT



VALVE SCHEDULE

NUMBER	MODEL	SIZE	TYPE	GPM	HEADS	PIPE	WIRE	DESIGN PSI	FRICTION LOSS	PSI	PSI @ 100'	PSI @ 100'
1	Rain Bird PEB	1-1/2"	Turf Spray	57.12	22	268.8	492.9	30	2.9	37.01	38.39	1.54 in/h
2	Rain Bird PEB	1-1/2"	Turf Spray	28.6	22	558.1	471.3	30	3.55	37.2	37.57	0.88 in/h
3	Rain Bird PEB	1-1/2"	Bubbler	4.75	19	231.1	391.6	40	6.64	48.32	48.33	7.66 in/h
4	Rain Bird PEB	1-1/2"	Turf Spray	43.43	20	366.2	392.2	30	2.28	35.32	36.63	1.4 in/h
5	Rain Bird PEB	1-1/2"	Turf Spray	38.06	22	175.6	121.9	30	1.1	34.62	35	2.2 in/h
6	Rain Bird PEB	1-1/2"	Bubbler	0.75	3	199.3	111.6	40	0.04	43.95	43.95	7.66 in/h
7	Rain Bird PEB	1-1/2"	Turf Impact	42.92	4	215.2	71.6	65	0.26	68.79	69.09	0.68 in/h
8	Rain Bird PEB	1-1/2"	Turf Impact	42.92	4	280.9	87.7	65	0.85	69.38	69.75	1.14 in/h
9	Rain Bird PEB	1-1/2"	Turf Spray	42.23	20	420.8	40.1	30	3.43	36.95	37.1	1.07 in/h
10	Rain Bird PEB	1-1/2"	Shrub Spray	58.46	40	745.9	45.4	30	3.53	37.74	38.06	0.9 in/h
11	Rain Bird PEB	1"	Bubbler	11.25	45	1,069	49.2	40	4.72	46.65	46.67	7.66 in/h
12	Rain Bird PEB	1-1/2"	Turf Spray	57.04	25	388.9	90.8	30	1.74	35.85	36.52	0.86 in/h
13	Rain Bird PEB	2"	Turf Spray	67.26	41	599.6	269.0	30	3.01	37.81	40.45	1.27 in/h
14	Rain Bird PEB	1-1/2"	Shrub Rotor	25.67	12	378.1	408.7	25	2.3	31.03	31.76	0.57 in/h
15	Rain Bird PEB	1-1/2"	Shrub Rotor	18.76	19	448.5	524.25	25	4.2	33.1	33.62	0.62 in/h
16	Rain Bird PEB	1-1/2"	Bubbler	7.75	69	572.5	32.7	40	3.69	47.59	47.7	7.66 in/h
17	Rain Bird PEB	1-1/2"	Shrub Rotor	56.42	21	820.4	327.7	25	2.76	31.8	33.12	0.52 in/h
18	Rain Bird PEB	1"	Turf Spray	22.49	13	102.6	289.8	30	1.42	35.0	35.23	2.16 in/h
19	Rain Bird PEB	1"	Shrub Rotor	18.04	15	332.5	357.4	25	1.54	29.23	29.39	0.37 in/h
20	Rain Bird PEB	1"	Bubbler	5.25	21	754.8	367.2	40	3.71	45.42	45.43	7.66 in/h
	Common Wire						2.506					

WATERING SCHEDULE

NUMBER	MODEL	TYPE	PRECIP	IN./WEEK	MIN./WEEK	GAL./WEEK	GAL./DAY
1	Rain Bird PEB	Turf Spray	1.54 in/h	1	39	2,228	
2	Rain Bird PEB	Turf Spray	0.88 in/h	1	69	1,973	
3	Rain Bird PEB	Bubbler	7.66 in/h	1	8	38	
4	Rain Bird PEB	Turf Spray	1.4 in/h	1	44	1,911	
5	Rain Bird PEB	Turf Spray	2.2 in/h	28	28	1,066	
6	Rain Bird PEB	Bubbler	7.66 in/h	1	8	6	
7	Rain Bird PEB	Turf Impact	0.68 in/h	0.5	45	1,931	
8	Rain Bird PEB	Turf Impact	1.14 in/h	0.5	27	1,159	
9	Rain Bird PEB	Turf Spray	1.07 in/h	1	57	2,407	
10	Rain Bird PEB	Shrub Spray	0.9 in/h	1	67	3,917	
11	Rain Bird PEB	Bubbler	7.66 in/h	1	8	90	
12	Rain Bird PEB	Turf Spray	0.86 in/h	70	70	3,993	
13	Rain Bird PEB	Turf Spray	1.27 in/h	1	48	3,228	
14	Rain Bird PEB	Shrub Rotor	0.57 in/h	1	105	2,695	
15	Rain Bird PEB	Shrub Rotor	0.62 in/h	1	97	1,820	
16	Rain Bird PEB	Bubbler	7.66 in/h	1	8	62	
17	Rain Bird PEB	Shrub Rotor	0.56 in/h	1	116	6,545	
18	Rain Bird PEB	Turf Spray	2.12 in/h	1	28	629.7	
19	Rain Bird PEB	Shrub Rotor	0.37 in/h	1	162	2,922	
20	Rain Bird PEB	Bubbler	7.66 in/h	1	8	42	
		TOTALS:			1,042	38,663	

CRITICAL ANALYSIS

Generated: 2022-08-18 17:07

P.O.C. NUMBER: 01
Water Source Information: 6" Cased Well

FLOW AVAILABLE	
Custom Max Flow:	150 GPM
Flow Available	150 GPM

PRESSURE AVAILABLE	
Static Pressure at POC:	65.00 PSI
Pressure Available:	65.00 psi

DESIGN ANALYSIS	
Maximum Station Flow:	67.26 GPM
Flow Available at POC:	150 GPM
Residual Flow Available:	82.74 GPM

Critical Station:	8
Design Pressure:	65 PSI
Friction Loss:	0.77 PSI
Fittings Loss:	0.08 PSI
Elevation Loss:	0 PSI
Loss through Valve:	3.53 PSI
Pressure Req. at Critical Station:	69.38 PSI
Loss for Fittings:	0.03 PSI
Loss for Main Line:	0.34 PSI
Loss for POC to Valve Elevation:	0 PSI
Loss for Backflow:	0 PSI
Critical Station Pressure at POC:	69.75 PSI
Pressure Available:	65 PSI
Residual Pressure Available:	-4.75 PSI

NOTE A:
POINT OF CONNECTION SHALL BE 10hp CENTRIFUGAL PUMP AND 6" CASED WELL.
VERIFY THE ACTUAL LOCATION, SIZE AND WATER PRESSURE IN THE FIELD PRIOR
TO STARTING WORK. IF ANY OF THE POC INFORMATION SHOWN ON THESE
DRAWING IS FOUND TO BE DIFFERENT THAN THE ACTUAL POC INFORMATION
GATHERED IN THE FIELD, IMMEDIATELY NOTIFY THE LANDSCAPE ARCHITECT AND
IRRIGATION CONSULTANT. SHOULD THE CONTRACTOR FAIL TO VERIFY THE POC
INFORMATION ANY CHANGES REQUIRED BY LOW PRESSURE OR VOLUME SHALL
BE THE SOLE RESPONSIBILITY OF THE CONTRACTOR.

MINIMUM PRESSURE REQUIRED	29.33 PSI @ POC
DESIGN WATER PRESSURE	65 PSI
MAXIMUM SYSTEM DEMAND	58.46 GPM

NOTE B:
CONTROLLER IS ASSPECIFIED. CONTRACTOR TO VERIFY FINAL LOCATION AND
ZONE CAPACITY OF CONTROLLER AND ELECTRICAL POC SHALL BE CONFIRMED
WITH OWNER'S AUTHORIZED REPRESENTATIVE PRIOR TO STARTING WORK.

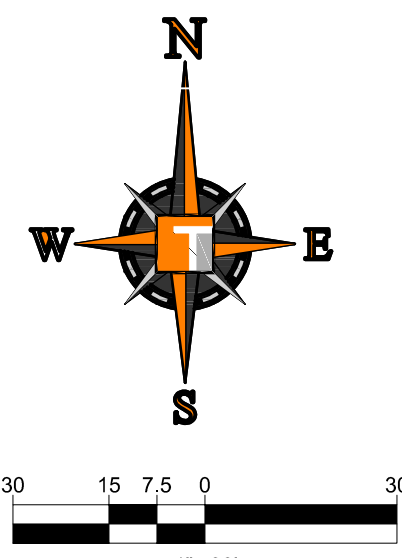
NOTE C:
MAINLINE AND RELATED EQUIPMENT SHOWN WITHIN PAVING FOR CLARITY ONLY,
ACTUAL MAINLINE AND RELATED EQUIPMENT LOCATION TO BE WITHIN PLANTERS
AND A MINIMUM OF 18" OFF ADJACENT HARDSCAPE AND OTHER OBSTACLES
TYP.

NOTE D:
CONTRACTOR SHALL ADJUST ALL HEADS AS REQUIRED TO ACCOMMODATE ANY
VERTICAL OBSTRUCTIONS THAT MAY OCCUR, INCLUDING BUT NOT LIMITED TO
LIGHT POLES, FIRE HYDRANTS, ETC. VERIFY ALL HEAD LAYOUT WITH OWNER'S
AUTHORIZED REPRESENTATIVE PRIOR TO STARTING WORK.

NOTE E:
BUBBLERS AND LATERAL LINES ARE SHOWN WITHIN PAVING FOR CLARITY ONLY.
ACTUAL LOCATION TO BE WITHIN PLANTER. BUBBLERS SHALL BE ALIGNED WITH
TREES AND AS DIRECTED BY OWNER'S AUTHORIZED REPRESENTATIVE.
CONFIRM ALL LAYOUT IN FIELD WITH OWNER'S AUTHORIZED REPRESENTATIVE
PRIOR TO STARTING WORK.

Michael D Grosswirth

Digitally signed by Michael D Grosswirth
DN: c=US, o=THOMAS ENGINEERING GROUP LLC,
ou=A0140C000001720E31831F0000EFAF,
cn=Michael D Grosswirth
Date: 2022.08.22
09:07:15 -'0400'



BROWARD COUNTY HIGHWAY CONSTRUCTION AND
ENGINEERING DIVISION

☐ PLAN CONSISTENT
WITH PLAT REQUIREMENTS

☐ PUBLIC RIGHT OF WAY APPROVAL
FOR PAVING, GRADING AND DRAINAGE

BY: _____ DATE: _____

DOES NOT INCLUDE APPROVAL
OF PAVEMENT MARKING & SIGNS

HOMAS
ENGINEERING GROUP

CIVIL ENGINEERS • PROJECT MANAGERS • LAND PLANNING • LANDSCAPE ARCHITECTS

■ 8300 NW 31ST AVENUE ■ 4950 W. KENNEDY BLVD. ■ 125 W. INDIANTOWN RD.
FT. LAUDERDALE, FL 33309 SUITE 600 33859 P. 561-203-7048
P. 561-202-7048 P. 561-203-7048

THE "MEMBERS, FIRM OR COUNTY OF FLORIDA ARE NOT AGENCY, BROKER OR DEALER IN THE SALE OF REAL ESTATE. ANY REALTY OR FINANCIAL TRANSACTION INVOLVING REAL ESTATE OR FINANCIAL INVESTMENT SHOULD BE HANDLED BY AN APPROPRIATELY LICENSED REALTOR OR FINANCIAL INSTITUTION."

[illegible]

811 KNOW WHAT'S BELOW
ALWAYS CALL 811
BEFORE YOU DIG

It's fast. It's free. It's the law.

www.callsunshine.com

BUILDING PERMIT

PROJECT No.:	F190044
DRAWN BY:	JV
CHECKED BY:	MDG
DATE:	05-23-19
CAD I.D.:	F190044 - IRRIGATION

PROJECT:

**FESTIVAL
MARKETPLACE
POMPANO BEACH, FL**

_____ FOR _____

URBN DESIGN
696 NE 125TH STREET
NORTH MIAMI, FL 33415



6300 NW 31ST AVENUE
FORT LAUDERDALE, FL 33309
PH: (954) 202-7000
FX: (954) 202-7070
www.ThomasEngineeringGroup.com

MICHAEL D. GROSS

REGISTERED LANDSCAPE ARCHITECT
LA 6666871
STATE OF FLORIDA

REGISTERED LANDSCAPE ARCHITECT
August 22, 2022
FLORIDA LICENSE NO. 6666871
FLORIDA BUSINESS REGISTRATION NO. 27528

SHEET TITLE:

**IRRIGATION
SCHEMATIC**

SHEET NUMBER:

L-3.1